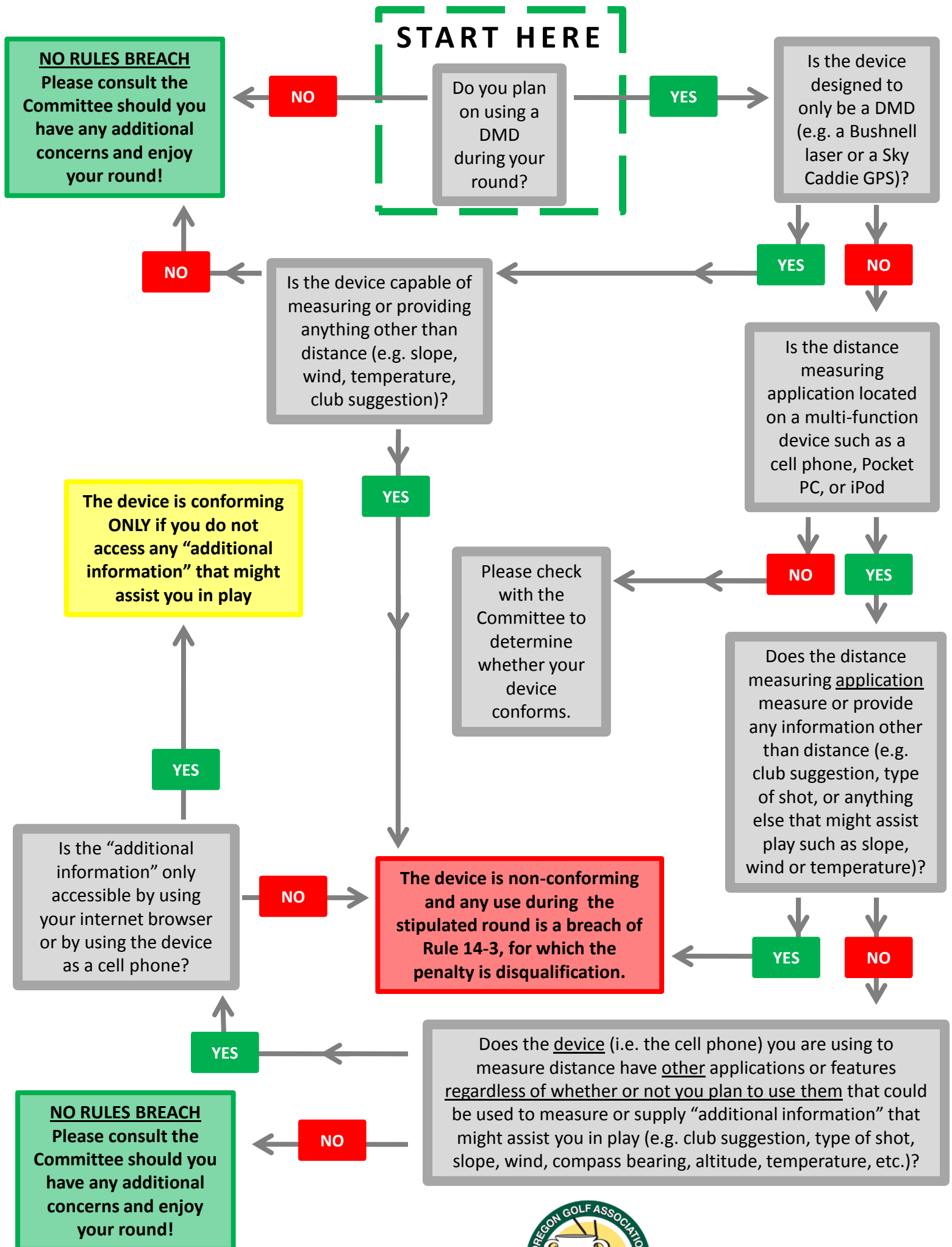


CAN YOU USE YOUR DISTANCE MEASURING DEVICE (DMD)?

NOTE: Rule 14-3 prohibits the use of DMDs though the Committee may establish a Local Rule to permit their use.

Without the Local Rule, any player that uses an artificial device to measure distance is in breach of Rule 14-3, for which the penalty is disqualification. When the Local Rule is in effect, a player is only permitted to use a DMD that measures distance only. Use the chart below to determine if your DMD is legal for play.



If you are not certain of any answer, you are encouraged to either consult the Committee or not use the device during the stipulated round. (3 suggested options as to how we will resolve doubt . . . see clarification document)



Oregon Golf Association
2840 Hazelnut Drive Woodburn, OR 97071
866-981-4653 | 503-981-7599 (fx) | rules@oga.org

CAN YOU USE YOUR DISTANCE MEASURING DEVICE (DMD)?

NOTE: Rule 14-3 prohibits the use of DMDs though the Committee may establish a Local Rule to permit their use.

Without the Local Rule, any player that uses an artificial device to measure distance is in breach of Rule 14-3, for which the penalty is disqualification. When the Local Rule is in effect, a player is only permitted to use a DMD that measures distance only. Use the questions below to determine if your DMD is legal for play.

- | | | | |
|----------|--|-----------------------|----------------------|
| 1 | Do you plan on using a DMD during your round? | YES, GO TO #2 | NO, GO TO #9 |
| 2 | Is the device designed to only be a DMD (e.g. a Bushnell laser or a SkyCaddie GPS)? | YES, GO TO #3 | NO, GO TO #4 |
| 3 | Is the device capable of measuring or providing anything other than distance (e.g. slope, wind, temperature, club suggestion)? | YES, GO TO #11 | NO, GO TO #9 |
| 4 | Is the distance measuring application located on a multi-function device such as a cell phone, Pocket PC, or iPod | YES, GO TO #6 | NO, GO TO #5 |
| 5 | Please check with the Committee to determine whether your device conforms. | SEE COMMITTEE | |
| 6 | Does the distance measuring <u>application</u> measure or provide any information other than distance (e.g. club suggestion, type of shot, or anything else that might assist play such as slope, wind or temperature)? | YES, GO TO #11 | NO, GO TO #7 |
| 7 | Does the <u>device</u> (i.e. the cell phone) you are using to measure distance have <u>other</u> applications or features <u>regardless of whether or not you plan to use them</u> that could be used to measure or supply “additional information” that might assist you in play (e.g. club suggestion, type of shot, slope, wind, compass bearing, altitude, temperature, etc.)? | YES, GO TO #8 | NO, GO TO #9 |
| 8 | Is the “additional information” only accessible by using your internet browser or by using the device as a cell phone? | YES, GO TO #10 | NO, GO TO #11 |

9

10

11

NO RULES BREACH
Please consult the Committee should you have any additional concerns and enjoy your round!

The device is conforming ONLY if you do not access any “additional information” that might assist you in play.

The device is non-conforming and any use during the stipulated round is a breach of Rule 14-3, for which the penalty is disqualification.

If you are not certain of any answer, you are encouraged to either consult the Committee or not use the device during the stipulated round. (3 suggested options as to how we will resolve doubt . . . see clarification document)

